

Lotus Tote

by EKATERINA FILIPPOVA-BLANCHARD



One Size



Florid with a lotus shape on the bottom, this slouchy bag offers plenty of texture. Casual and fancy it's perfect for holding all your everyday summer essentials. The handle is a double knit for extra stability.

Finished Measurements

Approximately 25½" / 65 cm circumference at widest point and
17¾" / 45 cm height before blocking

Materials

Approximately 396 yds / 330 m Salsa by Cheval Blanc (60% Cotton, 40% Acrylic; 120 yds / 100 m = 50 g) or any DK yarn

*

US 4 / 3.5 mm 16" / 40 cm circular needle
US 6 / 4 mm double pointed needles and circular needle

US 8 / 5 mm 16" / 40 cm circular needle
If necessary, adjust needle size to obtain accurate gauge

Size E / 3.5 mm crochet hook (for Picot Hem Bind off)

*

5 stitch markers (1 in different color for start of round),
cable needle (optional), tapestry needle

Gauge

20 sts and 20 rounds = 4" / 10 cm in Stockinette Stitch using US 8 / 5 mm needles after blocking

Whilst gauge is not important as the fit is not crucial, changes in gauge will result in size differences and the amount of yarn needed to complete the project

Pattern Difficulty
Intermediate

Skills Required

Disappearing Loop cast on, knit, purl, yarn over, cables

PATTERN NOTES

The pattern begins with Disappearing Loop cast-on and is worked seamlessly in the round from the bottom up. The base is a lace and the body is a combination of textured openwork and Stockinette Stitch side bands with the top of the picot hem at the cast off edge. It uses a crochet hook to seam up one live edge of knitting to close up the hem creating a decorative, lateral chain finish. The stitches are picked up from the base of the hem above the side band for the strap which is a double knit and attached to opposite side. Finally an I-cord is worked as a drawstring.

SITCH GUIDE

Mesh Stitch

(even number of stitches worked in the round)

Rnd 1: {k2 tog, yo twice, ssk} to end.

Rnd 2: {k2, k tbl, 1/1 RT, k1, k tbl, k1} to end.

Rnd 3: {yo, ssk, k2tog, yo twice, ssk, k2tog, yo} to end.

Rnd 4: {k1, 1/1 RT, k1, k tbl, 1/1 RT, k1} to end.

Repeat these four rounds.

Disappearing Loop cast-on

Link to photo tutorial →

Folded Picot Hem - Bind-off Row

Link to video tutorial →



PATTERN

NOTE: *When starting the Lotus Chart, you may find easier to work on 3 dpns than on 4. Adjust stitch positions accordingly and change to 4 dpns when there are enough stitches to fit on the needle.*

The chart represents sts that are on one dp needle. It may be useful to place markers between each repeat of the lace pattern.

Base

Using the Disappearing Loop cast-on method (*see Stitch guide*), cast on 8 sts. Distribute evenly on 4 dpns, or use a Magic Loop. Place marker and join in the round, being careful not to twist sts.

Work Rnds 1- 42 of Lotus pattern, following the chart or written instructions - total of 132 sts.

Body

Switch to larger circular needle.

Next Rnd: ssk, k62, k2tog, pm (side), ssk, knit to 2 sts before BOR marker, k2tog - total of 128 sts.

Set-up Rnd: *k4, pm to denote beginning of textured stitch pattern, work 7 repeats of Rnd 1 of Mesh Stitch, following the chart or written instructions to 4 sts before marker, pm, k4; remove side marker and repeat once more from *.

You now have 5 markers in your round, 2 pairs for the Mesh Stitch, and 1 marker that indicates the BOR.

Maintain 8-st Stockinette Stitch side panels throughout, working Mesh Stitch inbetween until you have worked 9" / 23 cm or desired length, from the beginning of Mesh Stitch, endign with Rnd 4.

Work 6 rnds in Stockinette Stitch (knit all), keeping all markers as set, then repeat Rows 1- 4 of Mesh Stitch twice between 8-st Stockinette Stitch side panels.

Work 2 rnds in Stockinette Stitch.

Picot Hem

Switch to smaller circular needle and work 6 rnds in Stockinette Stitch.

Next Rnd: {k2tog, yo} around.

Work next 6 rnds in Stockinette Stitch.

Joining Rnd (*see Stitch guide*): remove BOR marker. Holding the work facing you, fold the hem at the lace round, with the wrong sides facing each other.

*{With a crochet hook go in the middle of the stitch 13 rnds below (1st rnd of the hem) and into 1st ts on back needle, slip st onto crochet hook and off needle, catch

the yarn on the hook and draw the loop to the fabric surface} keeping the loop on the crochet hook, repeat once more, picking up in the next st of the same rnd. Pull 1st st through 2nd st on the crochet hook. Repeat from * until all sts have been bound off.

When you have 1 st left on the crochet hook, cut yarn, wrap yarn around the crochet hook and pull tail through remainig st on hook.

Handle

Holding the work facing you, pick up and knit 6 sts right above the side Stockinette band into the 1st rnd of the hem.

Next Row (WS): {k1fb} across = 12 sts.

Continue to work in double knit stitch as follows:

Row 1 (RS): {sl1 wyif, k1} 6 times.

Row 2 (WS): {sl1 wyif, k1} 6 times.

Work in pattern until the piece is 8" / 20 cm long.

Next Row (RS): {k2tog} across = 6 sts.

Bind off all sts purlwise. Cut the yarn leaving a 8" / 20 cm long tail and sew on the edge to the opposite side.

Attach the handle with a few stitches to the top eyelette row being careful going with your tapestry needle only through one layer of the hem.

I-Cord drawstring

Cast on 3 sts. Knit across, do not turn. Slide your 3 sts to the opposite end of the needle, keeping the yarn to the back. Bring the yarn across the back and knit another row, pulling the first stitch tight to eliminate any gap across the 3 sts. Continue in this manner (i.e., sliding after each row without turning) until you reach the desired length.

Finishing

Weave in all ends.

Soak the bag in lukewarm water for at least 20 minutes. Remove from water, gently squeeze out all excess water. Do not twist fabric! Roll inside a dry towel and stomp on it to get out all moisture possible. On a clean blocking surface, lay flat and smooth into shape. Leave in place until thoroughly dry.

Attach a small safety pin to one end of the I-cord and insert the drawstring between the stitches from the wrong side of the hem. Pull the drawstring all the way through the hem until the safety pin emerges at the other end of the casing with a few sts inbetween both openings. Knot the two ends of the drawstring to prevent them from the slipping through again.

Enjoy your new tote bag!

Find more designs by Ekaterina Filippova-Blanchard
at katytricotknits.com

On Ravelry as → KatyTricot

On Etsy as → KatyTricot

Follow me on Instagram → KatyTricot

→ Join my mailing list

Share your finished objects and admire others
on social media with the tags

#katytricot or #katytricotpattern and #lotustote

Thank you for supporting independent design!

Abbreviations

() - work instructions within parentheses as many times as directed

{ } - pattern repeat, work instructions within brackets as many times as directed

st(s) - stitch(es)

rnd - round

BOR - beginning of the round

pm - place marker

sm - slip marker

dpns - double pointed needles

k - knit

p - purl

yo - yarn over

k2tog - knit 2 stitches together

ssk - slip 2 sts as if to knit, then knit those two together through the back loops

k1fb - knit 1 front and back: knit into the front and back of the stitch

sl1 wyif - with yarn in front, slip 1 stith purlwise

s2kp - slip 1 , k2tog, pssso (pass the slipped stitch over the knit stitch and off the right needle)

1/1 RT - slip 1 st onto a cable needle and hold to back, k1, then k1 from cable needle

nupp - work {(k1, yo) 3 times, k1} all in same st, keeping loops loose - 7 sts from 1 st. Put all 7 loops back on left hand needle and knit all loops into 1 stitch through the back loops, then knit the resulting st again. Tighten yarn.

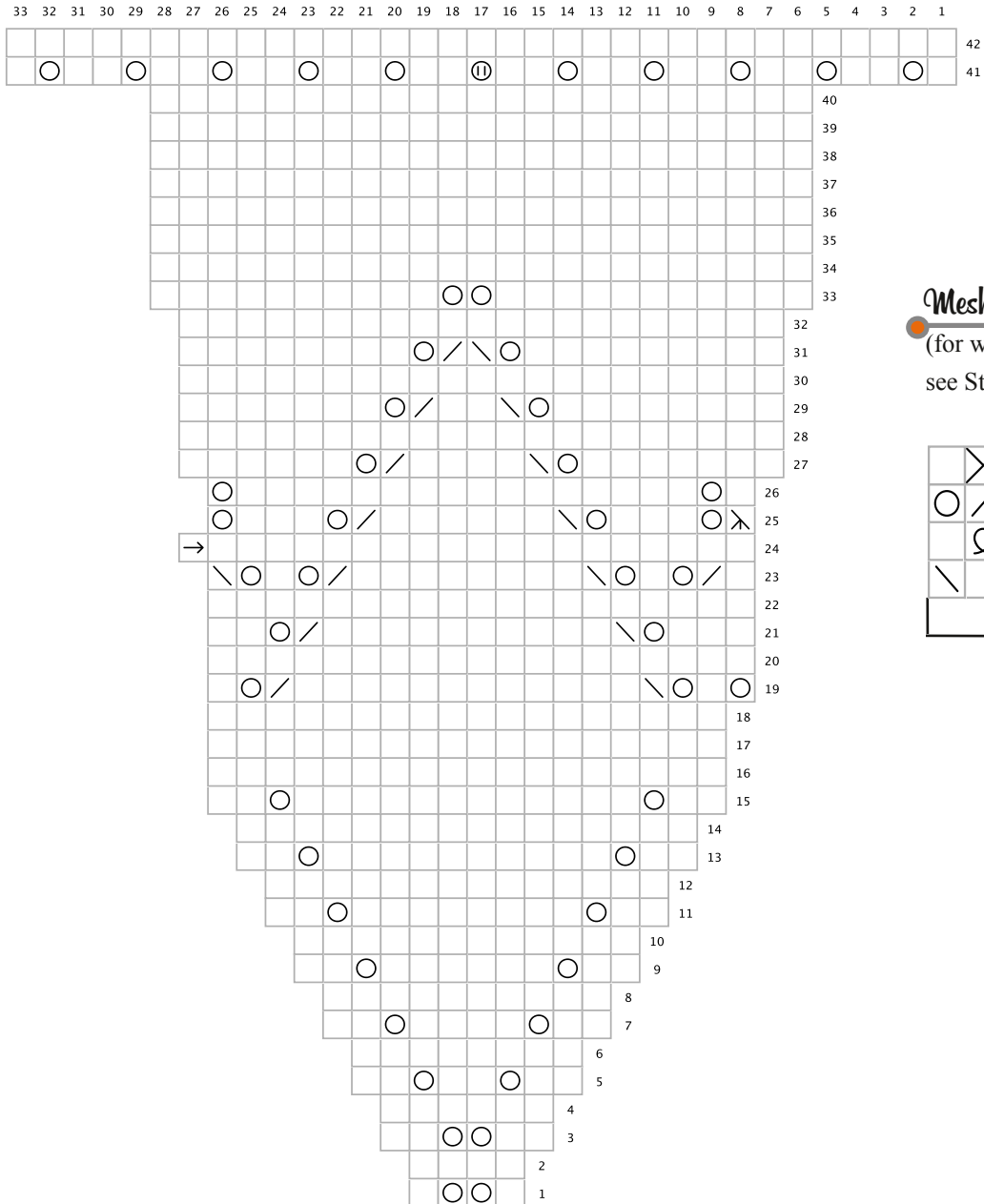
Move marker 1 st to the right - slip final st from left needle to right needle, remove marker, slip st back to left needle, replace marker for new BOR.

CHARTS

NOTE: All chart rows are worked in the round and read from right to left.

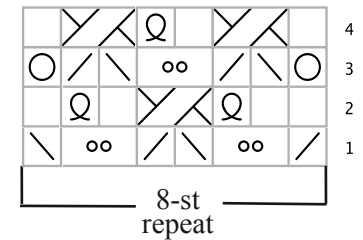
Lotus

worked 4 times around



Mesh Stitch

(for written instructions see Stitch Guide, page 2)



Key

- knit
- yo
- k2tog
- ssk
- s2kp
- k tbl
- nupp
- yo twice
- 1/1 RT
- move marker 1 stitch right

© Copyright agreement: This pattern is copyrighted, and is for personal and non-commercial use only. This means that you can knit it for yourself, for a gift or for charity. You may not sell a garment made from this pattern without special permission. Distributing this pattern in any manner is prohibited under the copyright. Downloading, or printing the pattern constitutes agreement within these terms. For any questions, please contact hello@katytricotknits.com

